

# Facility Requirements Summary

## Runways ●

- 1- Acquisition of all unowned land in RPZ areas
- 2- Construct paved shoulders (recommended)
- 3- Runway 16L blast pad does not align with design standards
- 4- Rehabilitate pavement on Runway 16L-34R
- 5- Preserve land for Runway 16L-34R extension (future)
- 6- Correct Runway 16L-34R surface variations, drainage and slope discrepancies present in the RSA

## Taxiways ●

- 7- Rehabilitate and widen taxiway.
- 8- Address direct access to apron; address fence in TLOFA.
- 9- Construct paved shoulders (recommended)
- 10- Correct Hot Spot
- 11- Fix drainage on TWY B2/B3

## Aircraft Storage and Parking ●

- 12- Construct T-hangars
- 13- Construct a conventional hangar
- 14- Construct additional transient aircraft apron space

## Navigational Aids and Lighting ●

- 15- Relocation of Medium Intensity Approach Lighting System with Sequenced Flashers (MALSF) on Runway 16L-34R
- 16- Runway 16L MALSR does not meet the three inch frangibility requirement within the RSA.

## Landside ●

- 17- Determine highest and best use for vacant quadrants in terminal area

## Support Facilities ●

- 18- Relocation of Air Traffic Control Tower
- 19- Construct aircraft wash facility
- 20- Identify site for safety center
- 21- Allocate land for a future full service FBO and/or corporate hangar
- 22- Evaluate opportunities for a satellite fuel farm and enhancement of existing fuel containment

## Utilities ●

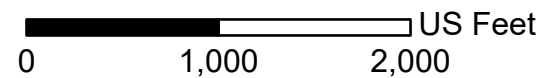
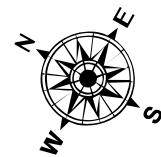
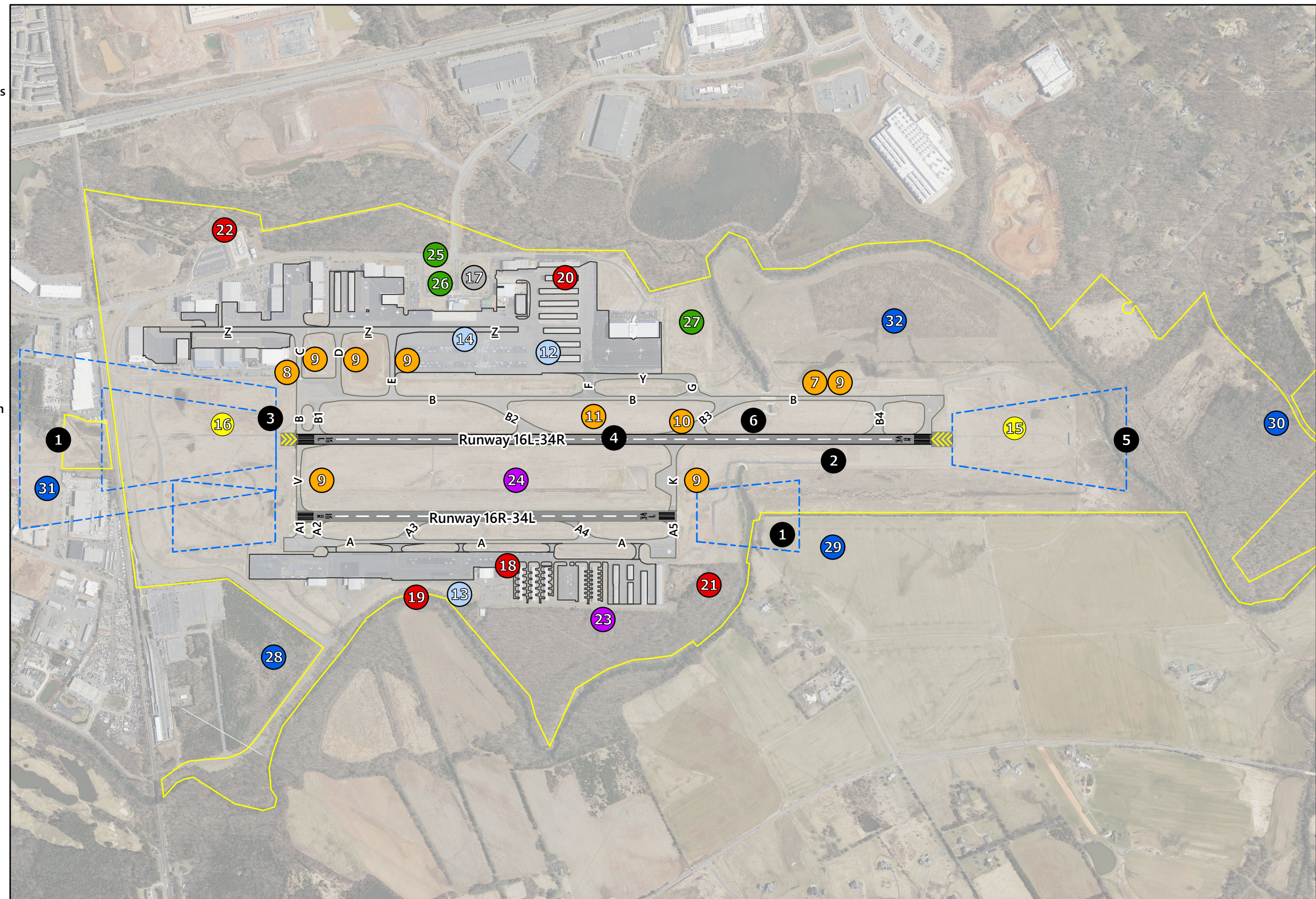
- 23- Expand utility lines
- 24- Assess temperature sensors for runways and bridges.

## Sustainability Initiatives ●

- 25- Evaluate harvesting energy
- 26- Suggest planning for EV charging stations and infrastructure
- 27- Suggest planning for electric aircraft charging stations infrastructure

## Land Acquisition/Disposition ●

- 28- Explore northwest vacant land opportunities (8-acres) between Piper and Observation Road
- 29- Explore southwest land opportunities (50- acre parcel) south of Board Run creek
- 30- Explore disposition of two parcels (11-acre and 14-acre) south of the Airport.
- 31- Acquire land below current RPZ for Runway 16L-34R and 16R-34L
- 32- Explore southeast land opportunity (54-acres) on airport property



## Legend

- Runway Protection Zones
- Property Line

