

Facility Requirements Summary

Runways ●

- 1- Acquisition of all unowned land in RPZ areas
- 2- Construct paved shoulders (recommended)
- 3- Runway 16L blast pad does not align with design standards
- 4- Rehabilitate pavement on Runway 16L-34R
- 5- Preserve land for Runway 16L-34R extension (future)
- 6- Correct Runway 16L-34R surface variations, drainage and slope discrepancies present in the RSA

Taxiways ●

- 7- Rehabilitate taxiway
- 8- Address direct access to apron; address fence and ditch protrusion in TLOFA
- 9- Construct paved shoulders (recommended)
- 10- Assess Hot Spot
- 11- Fix drainage on TWY B2/B3

Aircraft Storage and Parking ●

- 12- Construct T-hangars
- 13- Construct conventional hangars
- 14- Construct additional transient aircraft apron space

Navigational Aids and Lighting ●

- 15- Relocation of Medium Intensity Approach Lighting System with Sequenced Flashers (MALSF) on Runway 16L-34R
- 16- Runway 16L MALSR does not meet the three inch frangibility requirement within the RSA

Landside ●

- 17- Determine highest and best use for vacant quadrants in terminal area

Support Facilities ●

- 18- Relocation of Air Traffic Control Tower
- 19- Identify site for ARFF facility
- 20- Evaluate opportunities for a satellite fuel farm

Utilities ●

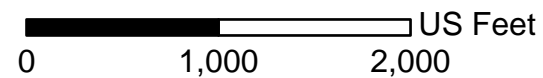
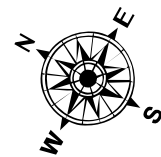
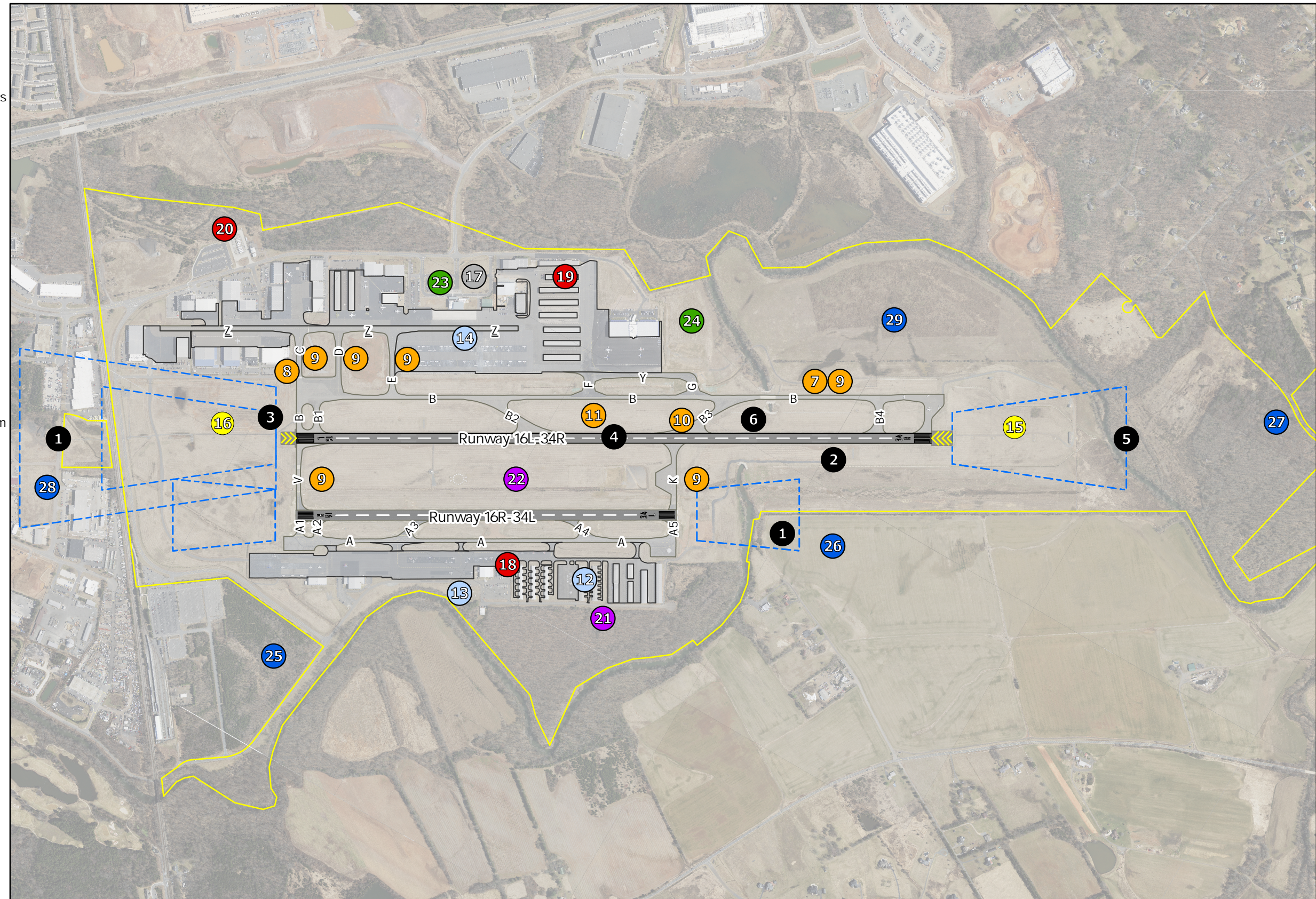
- 21- Expand utility lines
- 22- Assess temperature sensors for runways and bridges.

Sustainability Initiatives ●

- 23- Suggest planning for EV charging stations and infrastructure
- 24- Suggest planning for electric aircraft charging stations infrastructure

Land Acquisition/Disposition ●

- 25- Explore northwest vacant land opportunities (8-acres) between Piper and Observation Road
- 26- Explore southwest land opportunities (50- acre parcel) south of Board Run creek
- 27- Explore disposition of two parcels (11-acre and 14-acre) south of the Airport.
- 28- Acquire land below current RPZ for Runway 16L-34R and 16R-34L
- 29- Explore southeast land opportunity (54-acres) on airport property



Legend

- Runway Protection Zones
- Property Line

